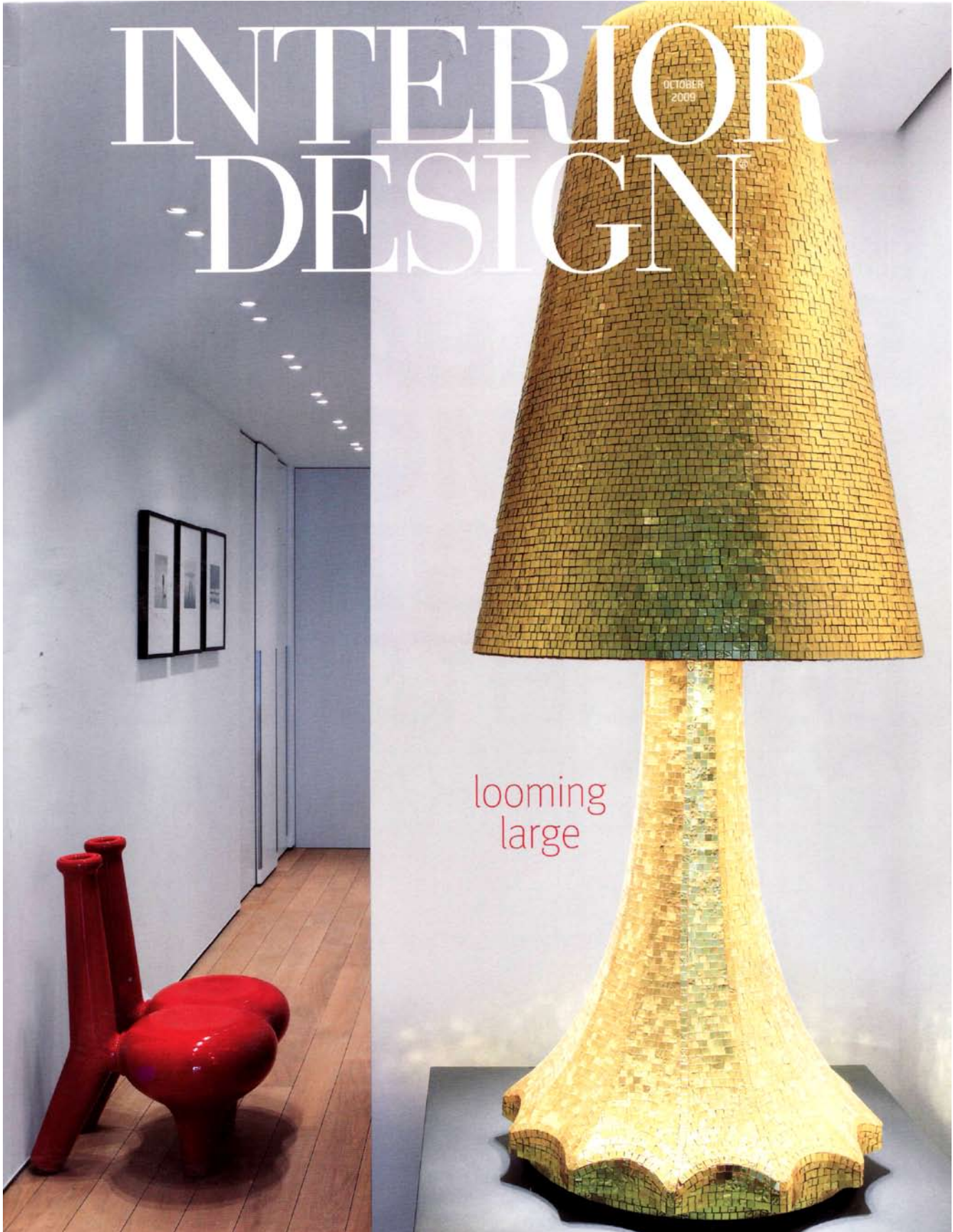


INTERIOR DESIGN

OCTOBER
2009

looming
large



DESIGNwire

TREND

ECO



A secondhand aluminum airplane wing, supported by stainless-steel legs and topped by glass, makes a first-class desk. Its name is Deborah, and it's designed by the team at Reestore. Custom commissions are welcome, as are donations of the customer's own industrial waste.

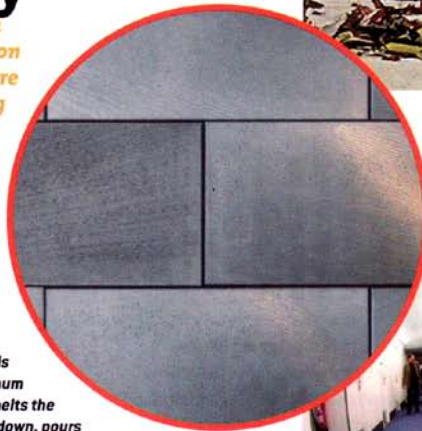


France's first metal-recovery business, the Bartin Recycling Group, is boasting its 150th anniversary and taking salvage to new altitudes via a subsidiary, Bartin Aero Recycling. At the Aéroport Châteauroux-Centre, Europe's first airplane-dismantling platform is a 161,000-square-foot slab of concrete on which end-of-service craft meet their maker—and their scraps meet plenty of other makers.

The Eco-Friendly Skies

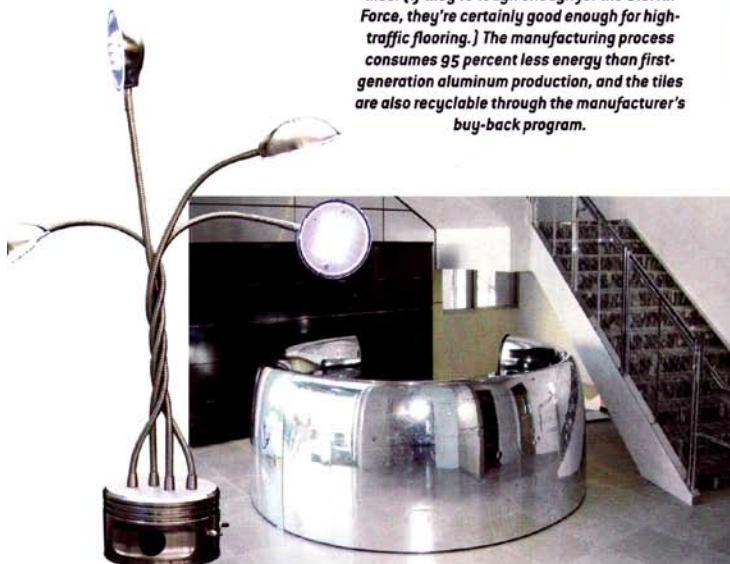
Air travel comes with a notoriously hefty carbon footprint. But as obsolete aircraft are grounded, a few planes are atoning for their environmental sins through reinvention as furniture, surfacing, and even lodging. Something's in the air.

Coverings Etc. scours military-airplane graveyards for aluminum cladding, melts the fragments down, pours the molten metal into block molds, and slices the result into Bio-Luminum tiles. (If they're tough enough for the U.S. Air Force, they're certainly good enough for high-traffic flooring.) The manufacturing process consumes 95 percent less energy than first-generation aluminum production, and the tiles are also recyclable through the manufacturer's buy-back program.



Everyone has nodded off on a plane. Here, sleep is actually encouraged. Hospitality entrepreneur Oscar Diós enlisted Monsén Arkitektur to transform a 1976 Boeing 747 into the 25-room Jumbo Hostel, parked at the entrance to Sweden's Stockholm-Arlanda Airport. Rates range from \$50 per night for dorm-style accommodations, with bunk beds, to \$470 for the luxury suite, which occupies the cockpit.

Go to Designwire at interiordesign.net for more images of the Jumbo Hostel and MotoArt furnishings.



Donovan Fell III of MotoArt has converted his boyhood obsession with aviation into custom furnishings. Built for the General Electric Company's research center in Qatar, the GE-747 Cowling desk combines the nacelle of a Boeing 747 engine with a bamboo work surface. And twisted pistons from a 1940's Jacobs Radial engine form the base of LED lamps. ➤